

# LG Carbon ZR1 Rocker panels

“THE MOST POWERFUL HEADERS ON THE PLANET”

Brought to you by LG Motorsports

972-429-1963



Thank you for purchasing LG Carbon ZR1 rockers for your C6 Z06 Corvette.

## **Parts Inventory:**

1. Driver side rocker panel
2. Passenger side panel
3. GM Driver Side 'Mud Flap'
4. GM Passenger Side 'Mud Flap'
5. Hardware kit

## Instructions:

### Prep:

Un-pack all of your items and inspect for any damage. Be sure to report anything wrong as soon as you receive your package.

### Figure 1: Unpack



Start your install by supporting the car with 4 jack stands on a level surface about 12" or more off of the ground. Take some time to wash the area that the rockers are going on, as you do not want to trap any dirt or debris between them and the paint of the car.

### Figure 2: Support and Clean



Once the area is clean you will need to remove both rear wheels to access the inner wheel well for install of the mud flaps. You will need to remove one of the factory screws in the inner wheel well by the rocker panel. This will attach the flap and locate it on the car before you drill and mount the remaining points.

**Figure 3: Removal of rear wheel and install of ‘mud flap’**



Once you have the one bolt in the flap you will now start by mocking up the rocker panel. You will start by removing two screws at the front fender under the car and these will be used to locate the rocker to the car. Lay the rocker panel up against the car and start the two screws at the front. **DO NOT TIGHTEN THESE YET!**

**Figure 4: Starting Rocker Install**



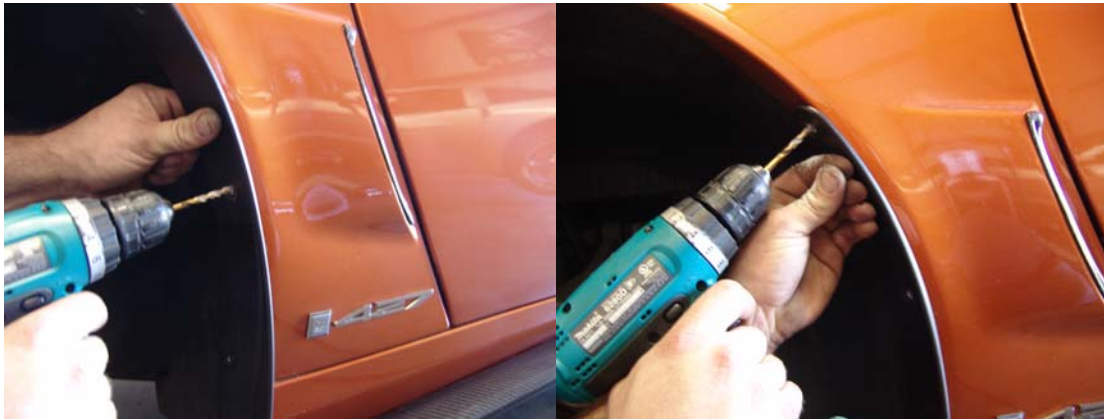
Now that the mud flap and rocker are loosely lined up on the car you will need to attach the rocker panel to the mud flap at the lower point. You will see two holes in the flap and two holes in the rocker panel already there. Use the two supplied 3/16” rivets with back up washer on the inside rivet. Go ahead and snap the rivets in place at this time with a hand held rivet gun.

**Figure 5: Installing Mud Flap to Rocker Panel**



Now that the two pieces are joined you will need to drill the remaining attachment points into the rear fender and lower rocker panel. Use the supplied rivets to attach the mud flap to the car first then work to the rocker panel.

**Figure 6: Final install of Mud Flap to car**

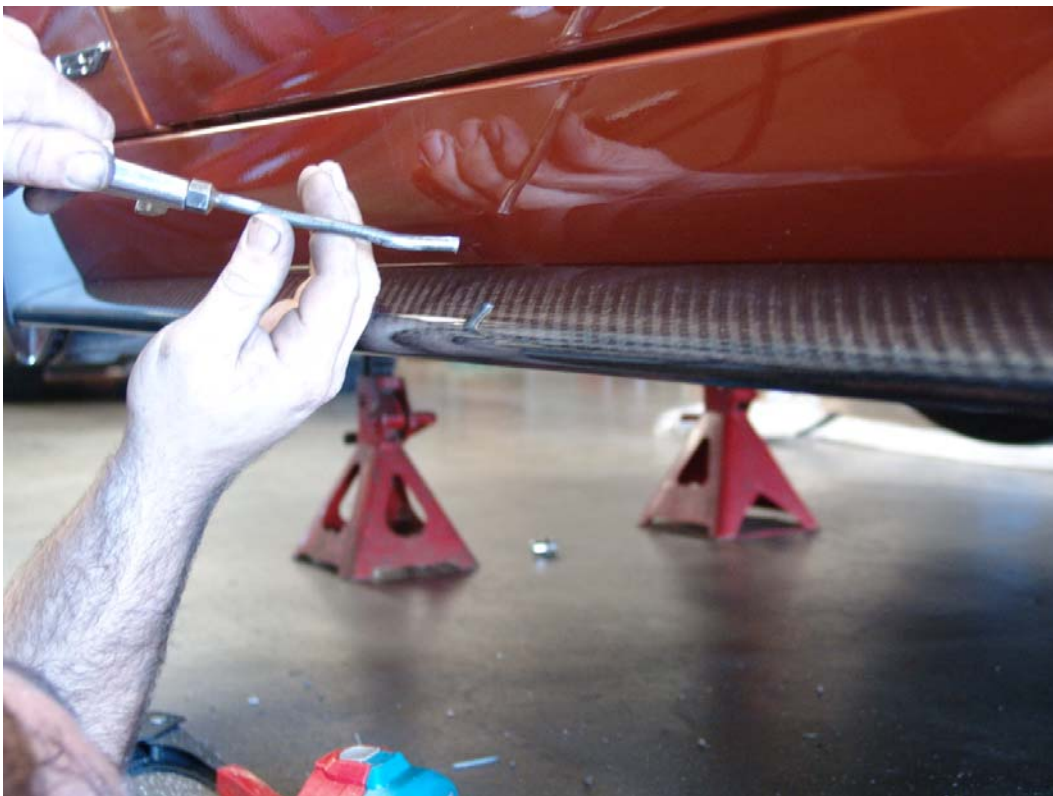


When drilling and riveting the panel into the rocker on the car it is best to start in the middle and work your way towards either end so you have a flat install against the body of the car. Making sure to blow out the area each time you drill so no debris is between the body and the panel. Once all rivets are in place you can not tighten the front two bolts all the way.

**Figure 7: Install of Rocker panel**



**Figure 8: Blow out area being drilled before Rivet install**



**Figure 9: Final tighten of front lower bolts**



Lou Gigliotti  
President LG Motorsports



LG Motorsports is not responsible for any improper install, modification to product, or any changes made by installer to product. Any welding or modification will void any product warrantee. LG Motorsports or the dealer is not liable for any loss, damage, or injury due to the direct or indirect use of this product. These components are intended for off-road use only and are not intended for use on street legal, pollution controlled vehicles.